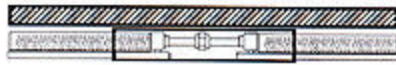
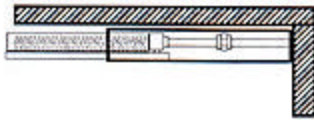
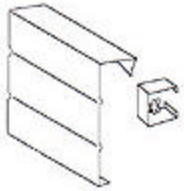


## Radiator Full Trims



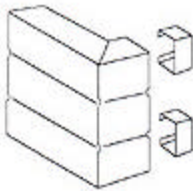
**FULL CENTER TRIM**

- 2" Minimum Overlap Required 12" and 24" Standard Lengths
- Available for Radiators One Tube to Six Tubes High



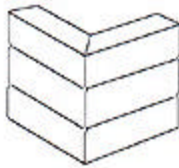
**FULL END TRIM**

- 2" Minimum Overlap Required 12" and 24" Standard Lengths
- Available for Radiators One Tube to Six Tubes High

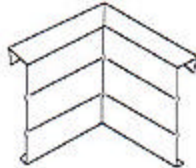


**FULL END CAP TRIM**

- 2" Minimum Overlap Required 12" and 24" Standard Lengths
- Returns are 2" for a Single Panel, or 5" for a Double Panel
- Specify Right or Left End Cap
- Available for Radiators One Tube to Six Tubes High



**FULL OUTSIDE CORNER TRIM**



**FULL INSIDE CORNER TRIM**

- 2" Minimum Overlap Required
- 12" by 12" Legs are Standard, 90° Corners are Standard, 135° Corners are Available as Specials
- Available for Radiators One Tube to Six Tubes High